



Ka-Band Transmit Reject Filter

Model 18811

This TRF provides deep rejection of the transmit (Ka) band with minimal effect on the receive (K) band.

- Full service (commercial & military) K-band reception
- Alternate Flange Configurations are Available Upon Request

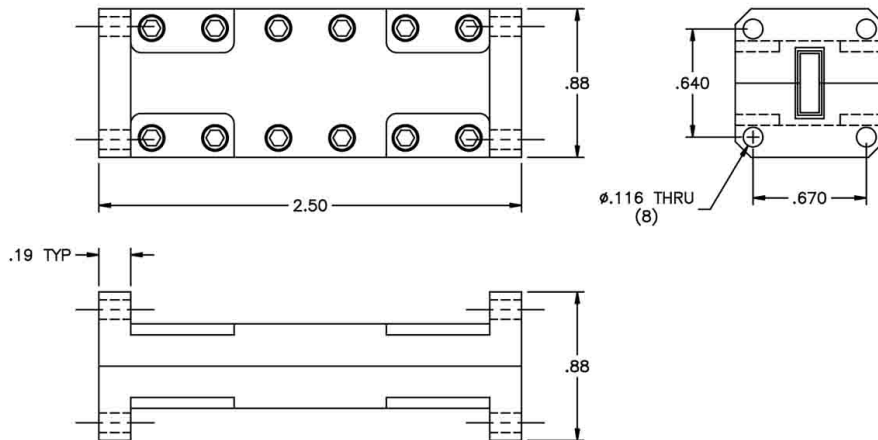


Specifications:

Passband:	17.7 - 22 GHz
Passband Insertion Loss:	0.10 dB Typ
Passband VSWR:	1.17:1 Typ
Reject Band:	27.5 - 31 GHz
Rejection:	90 dB Typ; 85 dB Min
Temperature Range:	-40°C to +75°C
Flanges:	See chart below
Dimensions:	2.50" x 0.88" x 0.88" (63.5 mm x 22 mm x 22 mm)
Finish:	White Lacquer

Flange Configurations

Model #	Input	Output
18811	WR42 Cover	WR42 Cover
18811-1	WR42 Grooved	WR42 Grooved
18811-2	WR42 Cover	WR42 Grooved
18811-3	WR42 Grooved	WR42 Cover



MICROWAVE FILTER CO., INC.
 6743 KINNE STREET, E. SYRACUSE, NY 13057