

Waveguide to Coaxial - Type "N" Adapters

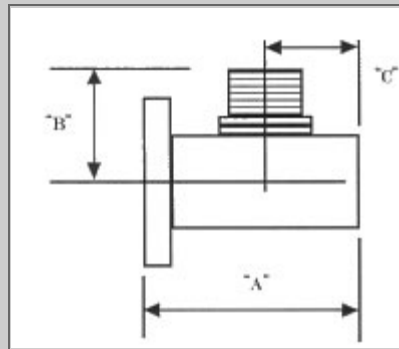


- ▶ 1.70 - 22.00 GHz Performance Frequency
- ▶ 1.25 Typical Max VSWR (VSWR varies with design)
- ▶ Male or Female Connectors available
- ▶ Numerous Flange Configurations available
- ▶ Aluminum (6061) or Copper WR Waveguide Available

Servsat Communications Inc. offers an array of waveguide to coaxial adapters. The waveguide sizes range from WR-62 to as large as WR-430. AMC also uses SMA and K type male and female connectors for their interface connections. AMC offers special unit design upon customer request. All AMC components are produced with the highest quality available. We insure our quality through a three-point inspection system. All AMC Adapters are painted flat black, but we offer additional upgrades on paint.

WAVEGUIDE FLANGES:

A = AMC QUICK DISCONNECT (MALE) PATENT PROTECTED
B = AMC QUICK DISCONNECT (FEMALE) PATENT PROTECTED
C = CPR STYLE CONTACT (CLEAR HOLES)
D = CPR STYLE CONTACT (ALL TAP)
E = CPR STYLE FLAT (CLEAR HOLES)
F = CPR STYLE FLAT (ALL TAP)
G = CPR STYLE GROOVED (CLEAR HOLES)
H = CPR STLYE GROOVED (ALL TAP)
I = CMR (CLEAR HOLES)
J = CMR (ALT TAP, CLEAR)
K = CMR (ALL TAP)
L = UG COVER (CLEAR HOLES)
M = UG COVER (ALL TAP)
N = UG COVER GROOVE (CLEAR HOLES)
O = UG COVER GROOVE (ALL TAP)



DIAGRAM

WR SIZE	FREQ: GHZ	DIM. A	DIM. B	DIM. C
62	12.4 - 18.0	1.75	1.25	0.50
75	10.0 - 15.0	1.50	1.10	0.50
90	8.20 - 12.4	1.63	1.10	0.50
102	7.00 - 11.0	1.40	1.08	0.50
112	7.05 - 10.0	1.76	1.17	0.51
137	5.85 - 8.20	1.81	1.28	0.56
159	4.90 - 7.05	2.00	1.32	0.50
187	3.95 - 5.85	2.25	1.36	0.70
229	3.30 - 4.90	2.26	1.37	0.76
284	2.60 - 3.95	2.72	2.19	0.85

P = UG CHOKE (ALL TAP)
Q = UG CHOKE (CLEAR HOLES)
R = UBR
S = PBR
T = CBR
U = UDR
V = PDR
W = CDR
X = SPECIAL FLANGES (CUSTOMER TO SPECIFY)

SAMPLE P/N: AMCN75LB

MODEL NO:	W/G SIZE	FLANGE TYPE	MATERIAL Brass/Alumn.
AMC-N	75	L	B

The above referenced part number describes the following Item: WR 75 waveguide to coaxial adapter type "Type N" With a cover flange in brass. All connectors are female Unless specified.

430	1.70 - 2.60	4.80	2.25	1.75
-----	-------------	------	------	------

AMC CONNECTOR CODES:
N = TYPE N COAX CONN.-FEMALE
NM = TYPE N COAX. CONN.-MALE.
S = TYPE SMA COAX. CONN.-FEMALE.
SM = TYPE SMA COAX. CONN.-MALE.
NOTE: TYPE N AND S ARE STANDARD

Note: All AMC models include an iridite/ corrosion Protection treatment, painted flat black, flanges are unplated, Iridited and polished. For other flange finishes, material or Paint color requirements, please specify