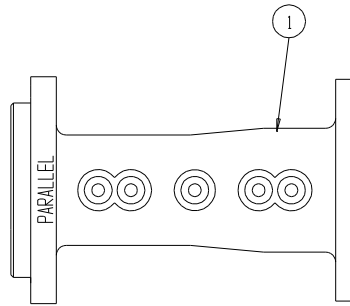
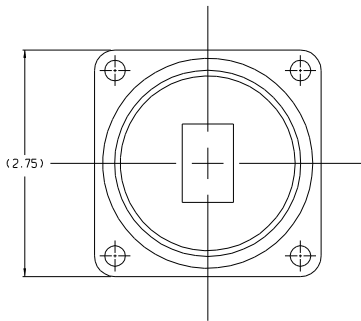
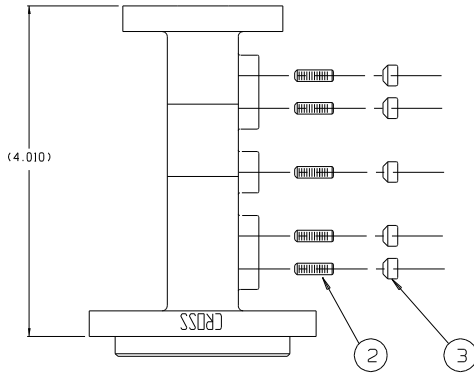


REVISIONS			
SYM.	DESCRIPTION	DATE	APPD.



**NOTES:**

1. INSERT ITEM #2, #6-32 SET SCREW (5 PLACES) AS SHOWN, TUNE ASSEMBLY RETURN LOSS  $\leq 17.7\text{db}$ , THEN SECURE WITH ITEM #3, #6-32 LOCKNUT (5 PLACES). OPERATING FREQUENCY: 5.850 TO 6.425 GHz.
2. FILL TUNING BOSSES (5 PLACES) FLUSH TO TOP WITH A PRESSURE TIGHT SEALANT (P/N 4093-030).
3. ALTERNATE SCREW LENGTH (SHORTER) MAY BE SUBSTITUTED FOR ITEM #2 AS REQUIRED.

3	LOCKNUT, #6-32	5	8500-106
2	SET SCREW, #6-32 x .75"	5	8307-009
1	CASTING, OMT Tx PORT WR137	1	4080-067
ITEM	DESCRIPTION	REQ.	PART NO.



TITLE  
ASSEMBLY, OMT TRANSMIT PORT  
WR137 C-BAND

MATERIAL	FINISH

THIS DOCUMENT CONTAINS PROPRIETARY DATA AND IS INTENDED ONLY TO CONVEY INFORMATION TO OUR CUSTOMERS. RESPECTIVE CUSTOMERS AND VENDORS: IT SHALL NOT BE REPRODUCED, COPIED, COMMUNICATED TO OTHERS OR USED AS A BASIS FOR THE MANUFACTURE, MODIFICATION OR SALE OF ANY APPARATUS WITHOUT THE SPECIFIC WRITTEN PERMISSION OF PRODELIN CORP.

TOLERANCES ARE IN DECIMAL INCHES, UNLESS OTHERWISE NOTED. DIMENSIONS ON FINISHED DIMENSIONS ARE AS FOLLOWS:  
 .X = ±.1      .XXX = ±.010  
 .XX = ±.05      ANGULAR ± 1°

NEXT ASS'Y	CODE IDENT. NO. 94661	REV.
DRAWN 5/8/97 BY CLT		
CHECKED BY	0183-521	
ENGR. BY		
MFG APVD BY	SCALE 1=1	SH. 1 OF 1

Parent Item 0200-964 Parent Description KIT WR137 TX PORT & MTG HDW

<u>Component Item</u>	<u>Component Description</u>	<u>Quantity Per</u>	<u>Ext Qty</u>	<u>UM</u>
0183-521	ASSY TX PORT WR137	1.0000	1.0000	EA
0200-940	KIT TRANSMIT PORT MTG	1.0000	1.0000	EA
4091-001-01	CTN 7 W X 5 L X 4 H (INCHES)	1.0000	1.0000	EA
ECN3308	REMOVE PAINT PROCESS	0.0000	0.0000	EA

GENERAL DYNAMICS SATCOM TECH  
Bill of Material Print

<u>Component Item</u>	<u>Component Description</u>	<u>Quantity Per</u>	<u>Ext Qty</u>	<u>UM</u>
-----------------------	------------------------------	---------------------	----------------	-----------