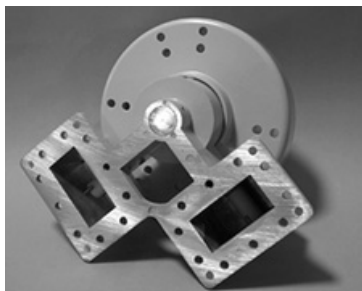
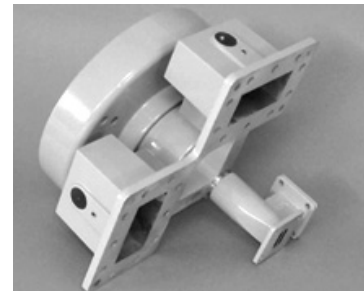


C / Ku-Band Feeds

ADL-RP3-OR-100



ADL-RP3-2+2B



	ADL-RP3-OR-100	ADL-RP3-2+2B
<u>Model</u>	ADL-RP3-OR-100	ADL-RP3-2+2B
<u>Frequency</u>	3.625 - 4.2 GHz	3.625 - 4.2 GHz 11.7 - 12.5 GHz
<u>Polarities</u>	2 C	2C / 2Ku
<u>F/D Range</u>	.300 - .365	.300 - .365
<u>Polarization</u>	Linear	Linear
<u>RF Port</u>	2 WR-229	2 WR-229 2 WR-75
<u>Mounting</u>	3 & 4 Hole Pattern on a 5.750°	3 & 4 Hole Pattern on a 5.750°
<u>Polarization Operation</u>	Manual	Manual
<u>VSWR</u>	1.40 Average	1.40 Average
<u>Polarization Isolation</u>	17 dB typ	17 dB typ (C) 25 dB typ (Ku)
<u>Rotation</u>	360°	360°
<u>Weight</u>	3.75 LB	4.00 LB