

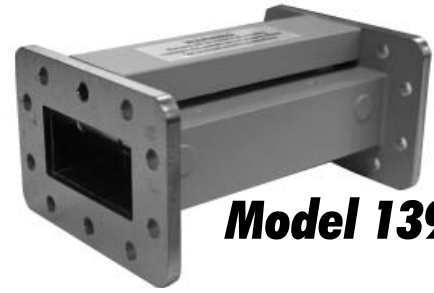


# C-Band Radar Elimination Filters

## 13961 Series

The Model 13961 is a lightweight, aluminum C-band bandpass filter – ideal for multifeed applications requiring side-by-side placement of filters.

The unit virtually eliminates interference caused by navigational communications (radar) of commercial and military aircraft, as well as coastal and marine vessels operating at frequencies above and below the C-band. Since this filter operates at the C-band frequencies, LNB saturation from these strong out-of-band signals is avoided.



**Model 13961**

### Specifications:

|                          |   |
|--------------------------|---|
| Passband:                | 3.7 - 4.2 GHz                                     |
| Insertion Loss:          | 0.5 dB Typ at Fo<br>0.75 dB roll off at band edge |
| VSWR:                    | 1.5:1 Typ   |
| Group Delay:             | Less than 8 ns Typ                                |
| Rejection:               |   |
| 25 dB Typ                | 3.65/4.25 GHz                                     |
| 60 dB Min                | 3.55/4.35 GHz                                     |
| 70 dB Min                | 3.50/4.40 GHz                                     |
| Transmit Band Rejection: |   |
| 70 dB Typ                | 5.8 - 6.5 GHz                                     |

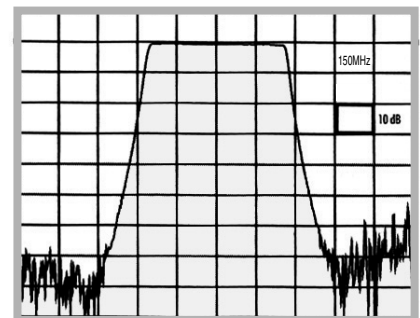
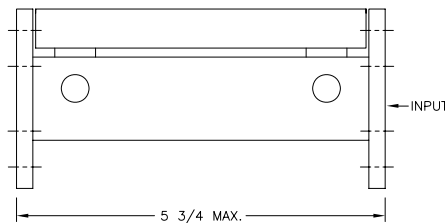
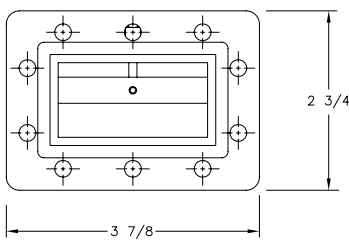
### Mechanical Specifications:

|            |                                     |
|------------|-------------------------------------|
| Dimensions | 5 3/4" L x 2 3/4" H x 3 7/8" D      |
| Weight:    | 1.3 lbs.                            |
| Flanges*:  | CPR229G (Input)<br>CPR229F (Output) |

\* Half gasket is supplied with each model

### Features:

- Quick Delivery
- Lightweight, Low Profile
- Ideal for Digital Applications (Low Differential Group Delay)
- Low Insertion Loss
- High Interference Rejection
- Other Frequency Bands Available Upon Request (Including International)
- Also rejects transmit band (5.8 - 6.5 GHz) - eliminating the need for a separate transmit reject filter



Typical Response Curve of 13961