



Ku-Band Bandpass Filter

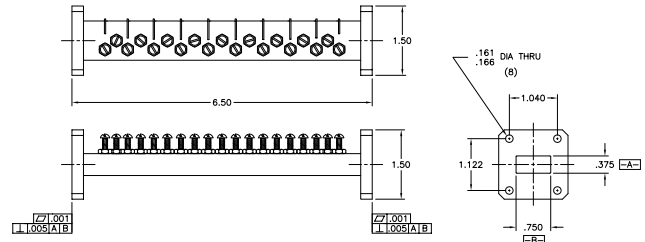
Model 16709

True “bandpass” characteristics make this filter the choice to reject interference from the transmit band **above** and potential interference from sources **below** the operating band, making it more versatile than a simple transmit reject filter.



Specifications:

Passband:	10.95 - 12.75 GHz
Insertion Loss:	0.5 dB Max
Passband VSWR:	1.2:1 Max
Rejection:	50 dB Min at 14.0-14.5 GHz 50 dB Min from 10.40-10.60 GHz
Pressurization:	Sealed to 5 PSIG
Flanges:	WR75 Cover



MICROWAVE FILTER CO., INC.
WWW.SERVSAT.COM

AUTHORIZE DISTRIBUTOR :
SERVSAT COMMUNICATIONS INC
770-754-4547