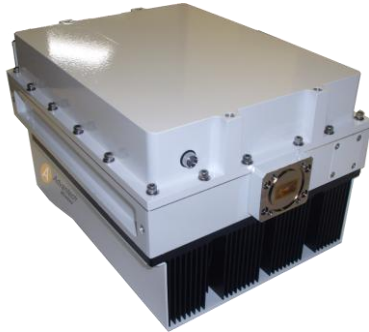




50W / 100W
SSPBM-K 2200-G series



Features

- Output power of 50W or 100W in a single compact package
- High linearity
- Full M&C capability via RS485 or Ethernet port
- Weatherproof construction
- CE marking

Overview

Based on GaN technology the new G-Series Ku-Band BUCs provide high power density in a compact size. Combined with the traditional Advantech features, these new series of BUCs provide the ultimate in performance and convenience. The products in the new G-Series Ku-Band BUCs are available as SSPA or SSPB (BUC). The first products available in the new G-Series are for 50W, 100W and 200W. The product described in this bulletin is for a 50W and a 100W BUC.

Options

- Ethernet port
- Waveguide Output Isolator
- 70 dB Receive Reject Filter (external)

Accessories

- Mounting kits
- External Receive Reject Filter
- Remote M&C panel with optional SNMP
- Flexible and rigid waveguides
- Boom mounting kit
- Replacement fans

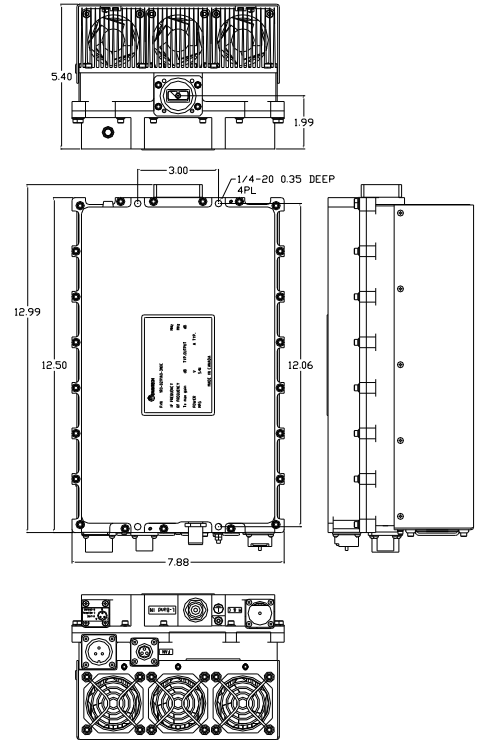


Figure 1: 100 W

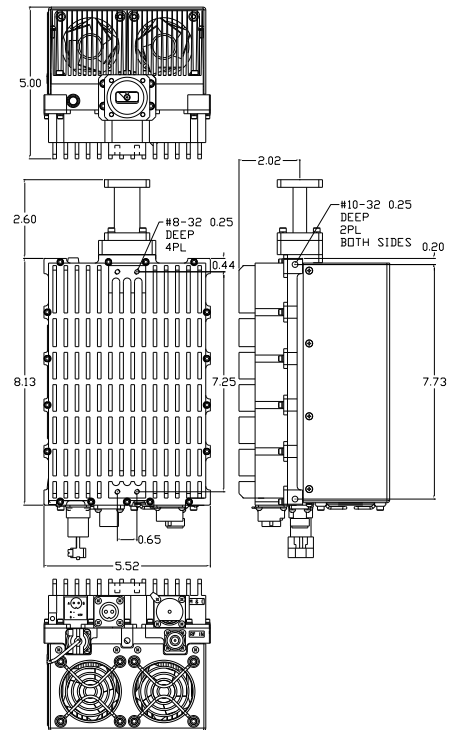


Figure 2: 50 W

