



# Bias Tee

## KEY FEATURES

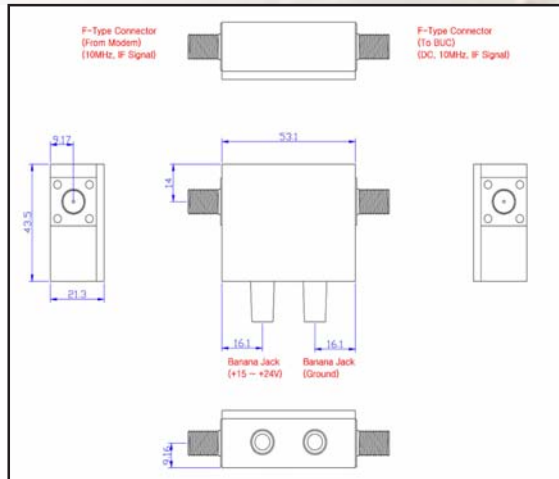
- ◆ Bandwidth 950 MHz to 2 GHz
- ◆ IF and 10 MHz passed through
- ◆ Up to 6 Amps DC input
- ◆ 15-64 VDC power input
- ◆ “N” or “F” RF interface options
- ◆ Two-year warranty

## ABT6AF / ABT6AN

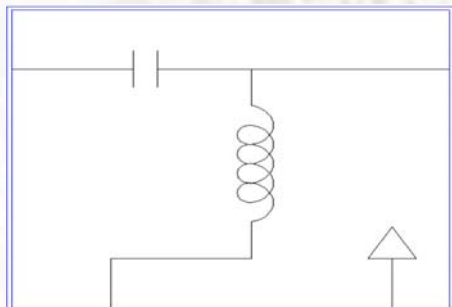


This small and efficient unit provides DC supply to a BUC (DC power supply separate) in case a modem cannot supply sufficient power or doesn't provide BUC power at all. The unit passes L-Band signal and 10MHz reference signal and injects up to 6A DC current.

### Mechanical Drawing



### Electrical



## TECHNICAL SPECIFICATIONS

RF frequency	950 MHz to 2 GHz
Voltage	15 – 64 VDC
Current	6 Amps max
Insertion loss	1.0dB max @10MHz 1.0dB max @950MHz–1.45GHz
DC interface	Banana jack
RF interface	ABT6AF From modem & to BUC: F-type ABT6AN From modem & to BUC: N-type
Impedance	ABT6AF 75 ohms ABT6AN 50 ohms
Temperature range	
operating	-40 deg C to +55 deg C
storage	-40 deg C to +75 deg C
Dimensions	53.1 (L) x 43.55 (W) x 21.3 (H) mm 2.1" (L) x 1.7" (W) x 0.9" (H)
Weight	150 g (25 oz) max